

About the RB-100

The Wimberley Riser Block™ allows you to use the Wimberley Head Version II™ on the original Skimmer™ ground pod. It can also be used to give you additional height when using the Skimmer II™ ground pod.

The Riser Block can be mounted on any 3/8"-16 stud mount on a tripod, monopod or ground pod to give you an additional 1" of height under any tripod head with a 3/8"-16 mounting hole. A 3/8-1/4" reducer bushing can be used to install the RB-100 on a 1/4" tripod or monopod stud (not included). You can stack Riser Blocks in increments for additional height as needed.

Note: The RB-100 is 1" tall. **You can stack additional blocks if more height is desired.**

Dimensions (L x W x H): 1.94" x 1.94" x 1.36" (block plus mounting stud)

Weight: 3.1 oz

Materials: Anodized 6061 Aluminum, stainless steel

Instructions

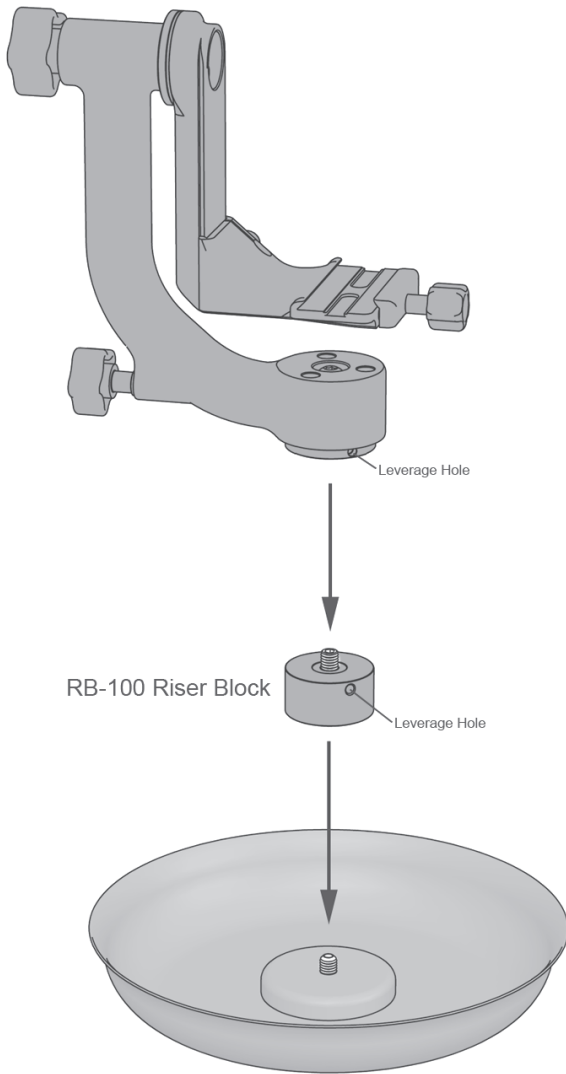


Figure 1

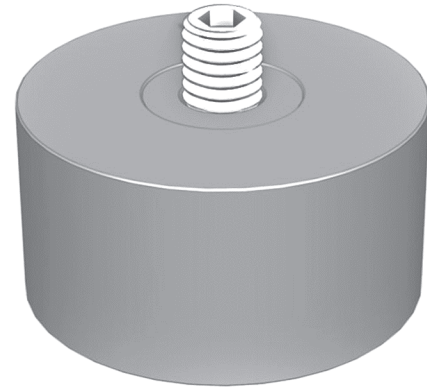
Thank you for your interest in Wimberley products. If you have any questions or comments please feel free to contact us (our contact information is located in the black box on the first page).

Wimberley™

RB-100 Wimberley Riser Block™



Made in USA



Package Contents:

- **RB-100:** 1" Riser Block (Qty 1)
- **Hardware:** 2" leverage pin (Qty 1)

Wimberley, Inc.

974 Baker Lane
Winchester, VA
22603 USA

Phone: 1-540-665-2744

Toll Free: 1-888-665-2746 (USA & Canada)

www.tripodhead.com info@tripodhead.com

Installation of the Riser Block:

1. Simply screw the Riser Block onto the mounting stud of the Skimmer. **It is a good idea to attach the RB-100 to the Skimmer tightly so that it doesn't come loose when you remove the Head.** Insert the 2" pin into the leverage hole on the side of the RB-100 to give you more mechanical advantage when attaching it tightly to the Skimmer.
2. Then screw the Wimberley Head Version II onto the Riser Block (see Figure 1).

If you plan to leave the RB-100 permanently attached to the Skimmer (or any mount such as a tripod, monopod, or ground pod), you may want to use medium strength (blue) Loctite adhesive or a similar product as directed.