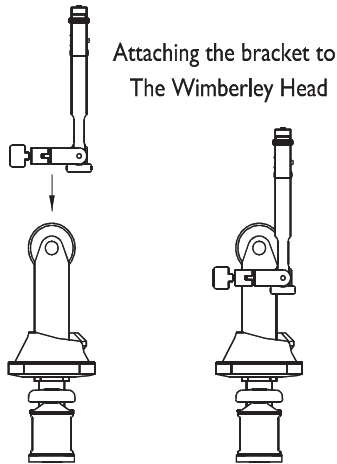


## About the M-5

The **M-5 Old Style Wimberley Head Module** is one of the components of the Wimberley Modular Flash Bracket System™. It is used in conjunction with the M-3 Tilt Arm Module to form the F-4 Old-style Wimberley Head (version I) Telephoto Bracket.



The F-4 Telephoto bracket attaches to the swing arm of the old style Wimberley Head (models WH-100 & WH-101 only) and allows you to use an off-camera flash unit. *This requires the use of an off-camera shoe cord or wireless adapter recommended by your camera manufacturer (not available through Wimberley).*

Dimensions (Overall L x W x H): 6.8 x 0.8 x 0.3 in  
Weight: 4.4 oz  
Materials: Anodized 6061 Aluminum, stainless steel fasteners

## Instructions

### Connecting Flash Bracket Modules:

1. Unscrew the 5-lobe knob on one of the components until it reaches the end of its range (exposing about 3/8" of the threaded stud on which the knob rides). Slip the forked end of the companion module over the exposed threads.
2. Seat the companion module by slipping one of the enlarged areas in its slot over the cylindrical nub at the base of the exposed threads.
3. Tighten the 5-lobe knob securely.

*(The figure below shows the connection between M-2 and M-3; the same principle applies for other connections.)*

# Wimberley™

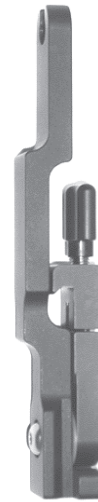
## M-5

### Wimberley Head (version I) Flash Bracket Module™

(For models WH-100 and WH-101 only)



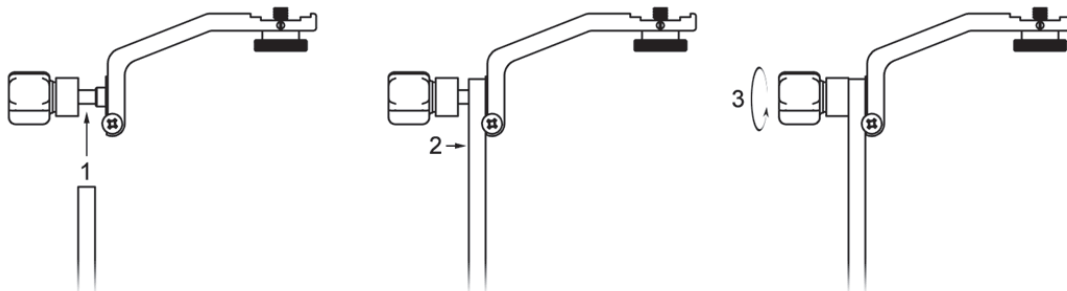
7 53182 83425 2  
Made in USA



#### Package Contents:

- **M-5:** Old-style Wimberley Head (version I) Module (Qty 1)

Wimberley, Inc. Phone: 1-540-665-2744  
974 Baker Lane Toll Free: 1-888-665-2746 (USA & Canada)  
Winchester, VA  
22603 USA www.tripodhead.com info@tripodhead.com



Instructions continued >>

## Attaching the F-4 Bracket to the Old-style Wimberley Head :

The F-4 bracket is designed to attach to the swing arm of the original Wimberley Head, version I models WH-100 and WH-101. This bracket is beneficial to use with the Head because mounting it will not affect the balance point of your lens as using the F-1 Telephoto Bracket on the Head would. It will also stay on the Head when swapping lenses, which can be very handy in the field. It will not fit on the swing arm of the Wimberley Head Version II (WH-200) because the swing arm of the Version II Wimberley Head is more narrow than that of the old style Head. The Version II also has machined Arca-Swiss style grooves that the M-5 module clamp cannot connect to securely. Our FA-09 Flash Bracket Adapter will allow you to attach this bracket to the Wimberley Head Version II (WH-200).

The M-5 module has an innovative pivoting, low-profile quick-release clamp, which eliminates loose screws and the need for tools (Fig. 1A). The pivoting jaw allows for flexibility in positioning of the bracket on the Head.

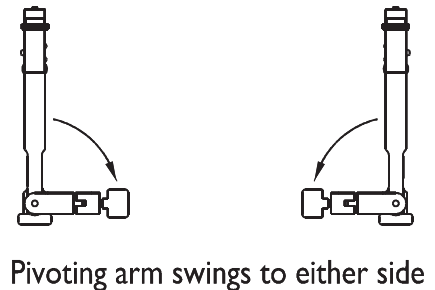
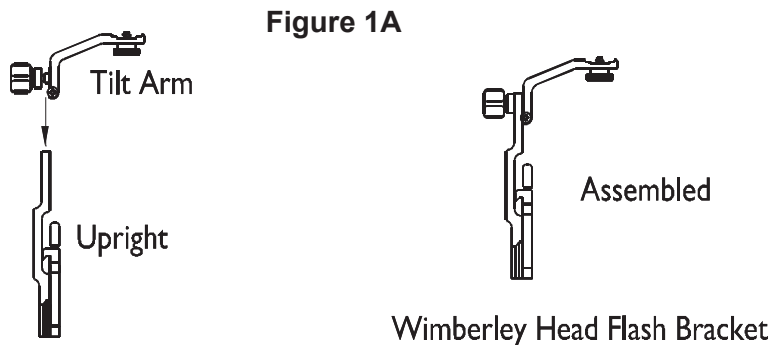


Figure 1B

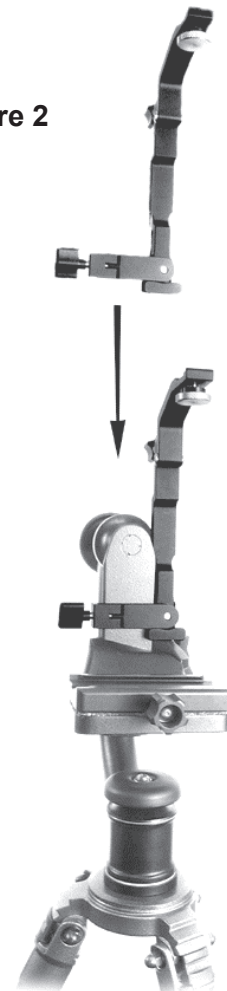
### Attaching the Bracket to the Swing Arm

The swing arm of the Wimberley Head has a lip molded along its length, and this is where the F-4 bracket quick-release attaches.

It makes it easier to mount the bracket if the swing arm is tightened all the way before mounting the bracket (tighten vertical axis adjustment knob).

1. Unscrew the bracket's quick-release jaws wide using the bottom knob on the M-5, then pivot the moving jaw with the knob to one side, perpendicular to the upright portion of the bracket (Fig. 1B).
2. Adjust the width of the clamp jaws so that they are a just bit wider than the swing arm lip.
3. Place the bracket above the lens mounting platform to allow for vertical up and down positioning of the flash unit. Hold the bracket above and to either side of the swing arm. Choose the position that feels best to you, and that allows you to comfortably access the focusing ring on your lens.
4. Slide the bracket down the swing arm from the top, making sure that the bracket jaws are completely parallel with the lip on the swing arm (Fig. 2).
5. Once the bracket is in a good position, turn the M-5 screw knob to tighten the clamp jaws and secure the bracket.
6. Adjust the bracket height as desired by loosening the M-5 knob and re-tightening after the up or down adjustment is made.

Figure 2



**Thank you for your interest in Wimberley products.** If you have any questions or comments please feel free to contact us (our contact information is located in the black box on the first page).