

About the FA-09

The FA-09 flash bracket adapter slides onto the swinging arm of the Wimberley Head Version II (WH-200) and allows you to use the old-style Wimberley Head flash bracket (F-4). The adapter has special cutouts that allow it to spring open and stay attached to the arm of the Head even when you are not using the flash bracket.

Dimensions (L x W x H): 1.8" x 1.2" x .2"
Weight: .04oz (plate)
Materials: Anodized 6061 Aluminum

Instructions

Attaching the FA-09:

1. Slide the adapter onto the arm of the WH-200. The end with the two nubs should point down (see Fig. 1).
2. Slide the F-4 bracket onto the FA-09 and tighten the bracket's quick-release clamp (see Fig. 2). When you remove the bracket, the FA-09 will stay on the Head (see Fig. 2).

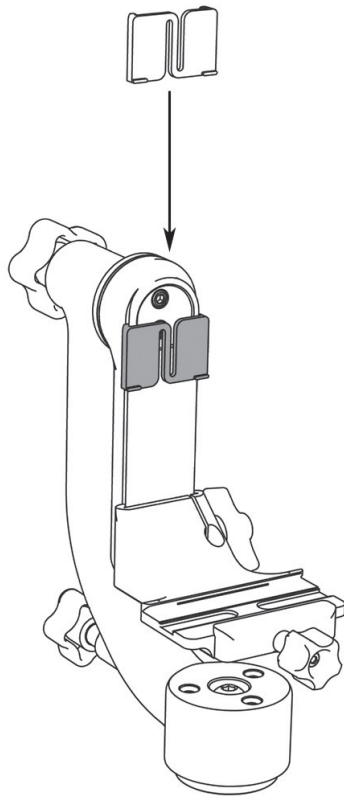


Figure 1

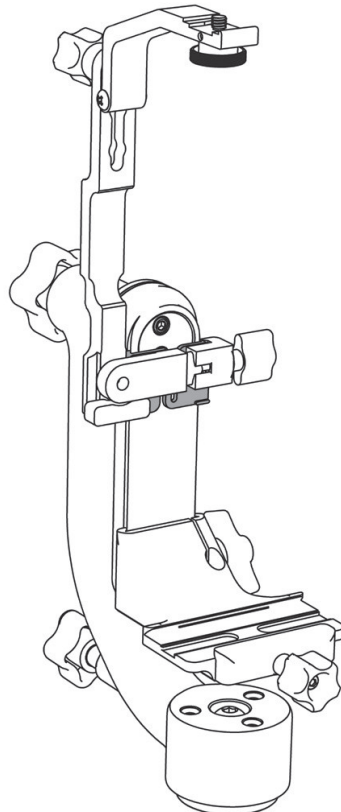


Figure 2

Wimberley™

FA-09

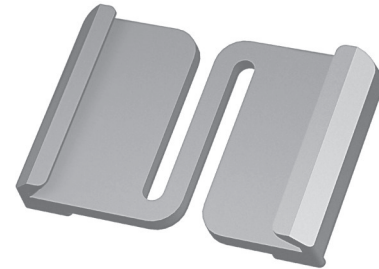
Wimberley Head Flash Bracket Adapter™

For mounting the old-style WH flash bracket (F-4)
to the WH-200 swing arm



7 53182 83419 1

Made in USA



Package Contents:

- Flash Bracket Adapter: FA-09 (Qty 1)

Wimberley, Inc.
974 Baker Lane
Winchester, VA
22603 USA

Phone: 1-540-665-2744

Toll Free: 1-888-665-2746 (USA & Canada)

www.tripodhead.com info@tripodhead.com

Thank you for your interest in Wimberley products. If you have any questions or comments please feel free to contact us (our contact information is located in the black box on the first page).