

# Wimberley™

## About the C-30

The **C-30 Quick-Release Clamp** uses the Arca-Swiss geometry. It is compatible with most Arca-Swiss style quick-release plates, such as those made by Wimberley, Really Right Stuff, Kirk Enterprises, LL Rue, Arca-Swiss and Markins. It is not compatible with most Bogen, Manfrotto or Gitzo quick-release plates.

The C-30 clamp is 4.1" long. It has two 3/8" threaded holes that are used to mount the clamp to the non-quick release platform of the old-style Wimberley Head (WH-100). The C-30 clamp is also the replacement clamp for the WH-101 model, the most recent version of the old-style Wimberley Head which came with a quick-release clamp installed on the lens support platform.

Dimensions (Overall L x W x H): 4.2 x 3.3 x 0.98 in

Weight: 8.5 OZ (includes mounting screws)

Materials: Anodized 7075 T6 & 6061 aluminum, stainless steel fasteners

## Instructions

### Mounting the C-30 to the Lens Support Platform:

1. Remove any cork or rubber padding from the Wimberley Head platform before attaching the clamp (this provides a more rigid connection). It is not necessary, but it is recommended. To do this, simply peel off the cork (use a butter knife or plastic spatula if needed). Use lighter fluid as a solvent to remove any excess adhesive that remains on the platform.
2. Use the enclosed hex key and stainless steel fasteners to mount the clamp to the platform of the Wimberley Head. Make sure that the edge of the clamp is parallel to the front edge of the platform as in Fig. 1.



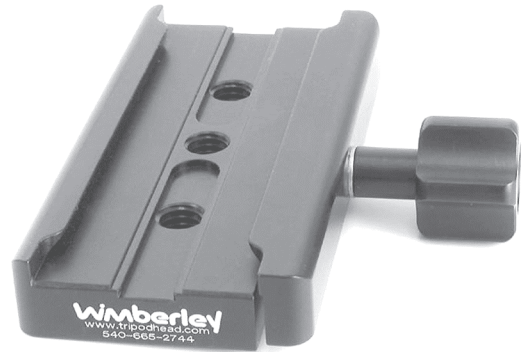
Figure 1

## C-30 Quick-Release Clamp™



7 53182 83412 2

Made in USA



### Package Contents:

- **Quick-release Clamp:** C-30 (Qty 1)
- **Mounting Screws:** 3/8"-16 x 5/8" Button Head Cap (Qty 2)
- **Washers:** 3/8" ID (Qty 2)
- **Hex Key:** 7/32" (Qty 1)

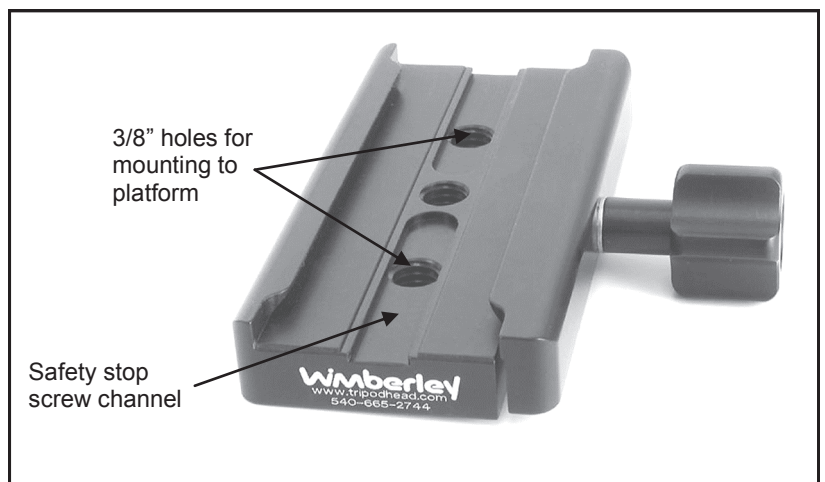
Wimberley, Inc.

Phone: 1-540-665-2744

974 Baker Lane  
Winchester, VA  
22603 USA

Toll Free: 1-888-665-2746 (USA & Canada)

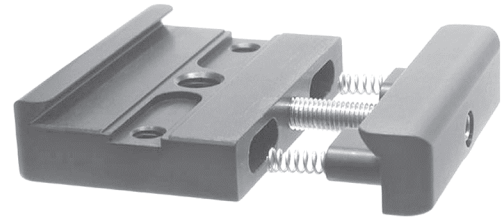
www.tripodhead.com info@tripodhead.com



Instructions continued on back >>

## — Instructions (Continued) —

The clamp is constructed of 7075 T6 aluminum (about 1.8 times as strong as 6061), 6061 aluminum and stainless steel. The clamp has a unique hidden tongue and groove design that protects internal parts from dust and grit (see Fig. 2). The tongues are nearly twice as long as those on other Arca-Swiss style clamps. This added length counteracts the tendency for the moving jaw of the clamp to tip backwards during clamping, thus keeping the jaws aligned with the geometry of the plate. This also eliminates unwanted bending stresses on the stud on which the knob rides.



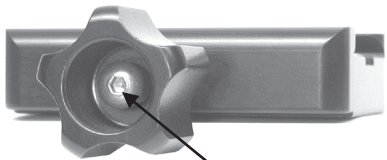
**Figure 2**  
(C-10 Clamp shown)

### Loading a Quick-release Plate in the Clamp Jaws

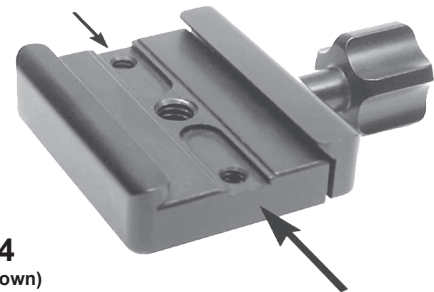
Open the jaws of the clamp by turning the 5-pronged knob counter-clockwise. You can load a quick-release plate by opening the jaws of the clamp minimally and sliding the plate in from the end (end loading), or you can open the jaws of the clamp wide so that they clear the entire width of the plate and then load the plate from the top (top loading). **You will need to top load your plate if you have safety-stop screws installed on your plate.**

**Additional features:** There is a captive screw in the end of the threaded stud of the clamp knob (Fig. 3). This screw keeps the knob and internal workings of the clamp captive, which means that the knob should not unscrew entirely and come apart unexpectedly. You should not need to back the knob all the way off the clamp stud. **Note: when not in use, protect the clamp knob from hard knocks and blows. During transport, we recommend closing the clamp all the way and covering the clamp knob with adequate padding or bubble wrap to prevent damage (bending) to the knob stud if it is dropped or jostled against another hard surface.**

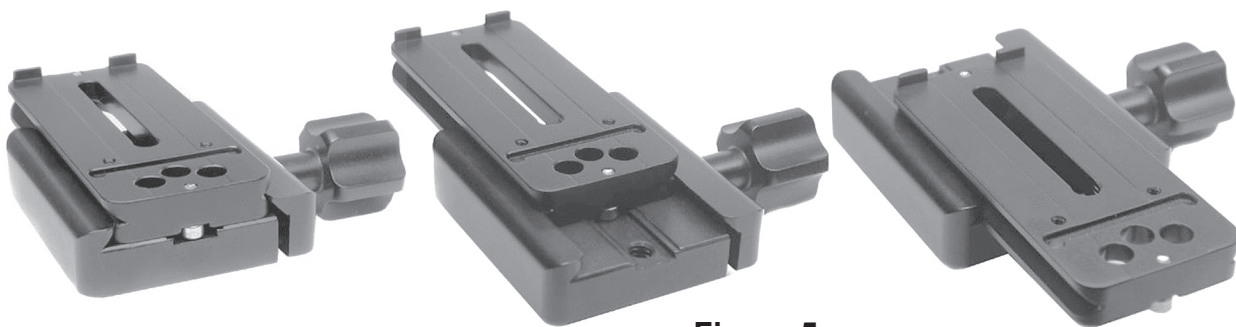
Two shallow, finger-shaped channels have been machined into the face of the clamp from the ends, stopping just short of the central 3/8" tapped hole (see Fig. 4). These channels allow greater forward-backward adjustment when using the optional safety-stop screws on Wimberley plates or on other compatible quick-release lens plates that include this safety feature (see Fig. 5).



**Figure 3**  
(C-10 Clamp shown)      Captive Screw



**Figure 4**  
(C-10 Clamp shown)



**Figure 5**  
(C-10 Clamp shown)

**Note:** The C-30 quick-release clamp was originally designed to convert the old-style Wimberley Head gimbal (WH-100) to a head with quick-release capability. The C-30 was the standard quick-release clamp sold on the classic Wimberley Head (WH-101) until this model Head was discontinued at the end of 2005. Although the C-30 clamp is longer than our other quick-release clamps, it will not give you any significant mechanical advantage over using a smaller Wimberley clamp for applications other than on the Wimberley Head.

**Thank you for your interest in Wimberley products.** If you have any questions or comments please feel free to contact us (our contact information is located in the black box on the first page).