

About the AP-903

The **AP-903 Sidekick Shifter Combo** moves the base of the Sidekick away from the ball head just enough to reposition the center of gravity of the lens, moving it closer to the center of the ball head, thus allowing the lens to balance optimally. The Shifter Combo is required (or is an alternative configuration to using a replacement foot) when using specific lenses with the Sidekick. If the Shifter Combo is not used where recommended, the user will sacrifice performance.

A few larger lenses may also require the use of a quick-release replacement foot (to reduce the lens profile) in addition to the Sidekick Shifter Combo; however, most lenses that require a Shifter Combo will work well in combination with a standard QR lens plate. For your specific lens(es), refer to the Lens Plate Recommendation chart on our website or in our product catalog for more information.

The Shifter Block and three Spacer Plate combination of the AP-903 attaches easily to the bottom mounting base of the Sidekick using pre-drilled mounting holes. **Note:** Older Sidekicks may not have these drilled holes, or may have two differently sized holes. This Shifter Combo can be mounted securely without using both of the center fasteners; however if no mounting holes are present, or if your lens does not balance with this Shifter Combo, please contact us for assistance.

Dimensions (L x W x H): 2.7" x 1.5" x 1.5"

Weight: 5.6OZ (plate, mounting screws)

Materials: Anodized 6061 Aluminum, stainless steel fasteners

Instructions

Attaching the AP-903 Sidekick Shifter Combo:

1. Attach the Shifter Block and Spacers to the flat face on the lower portion of the Sidekick using the 4 fasteners and 2 hex keys included as shown below.
2. Drive the screws until you first meet resistance (**Do not over tighten**), then turn them about 40° farther to establish appropriate, but not excessive, torque.

The Shifter Combo can remain attached if the Sidekick is only used with your largest lens, or if your other lenses balance well with the Shifter attached. If other lenses will not reach optimal balance on the Sidekick when the Shifter is attached, remove the Shifter Combo from the Sidekick when you are not using the lens that requires it. This may be inconvenient, but it is necessary for optimal product function.

IMPORTANT NOTE: The fasteners included in the Sidekick Shifter kits are specific to the number of spacers used in each kit. If spacer plates are added to or removed from this Shifter Combo, the fasteners in this kit will either be too short or too long to mount it to the Sidekick. In this case, contact us and we can provide the additional hardware needed to connect the Sidekick Shifter to your gimbal head adapter in order for your lens to reach optimal balance.

If you experience difficulty getting the screws started in the mounting holes, there may be a small amount of powder coating residue covering the beginning threads of the hole. A greater amount of force may be required to install the screws, however you want to be careful not to cross-thread. Contact us if you have concerns and we'll be happy to assist you.

Sidekick Shifter Kit specs:

AP-900 Sidekick Shifter Block = 0.75" offset

AP-901 Combo: Sidekick Shifter + one (1/4") spacer plate = 1.0" offset

AP-902 Combo: Sidekick Shifter + two spacer plates = 1.25" offset

AP-903 Combo: Sidekick Shifter + three spacer plates = 1.50" offset

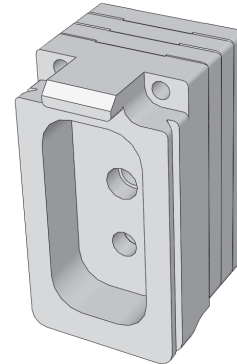
Wimberley™

AP-903 Sidekick Shifter Plate



7 53182 83447 4

Made in USA



Package Contents:

- **AP-900:** Sidekick Shifter Block (Qty 1)
- **AP-920:** Sidekick Shifter Spacer (Qty 3)
- **Mounting Screws:** 8/32 x 1.5" (Qty 2)
- **Mounting Screws:** 1/4-20 x 1.5" (Qty 2)
- **Hex Key:** 5/32" (Qty 1)
- **Hex Key:** 9/64" (Qty 1)

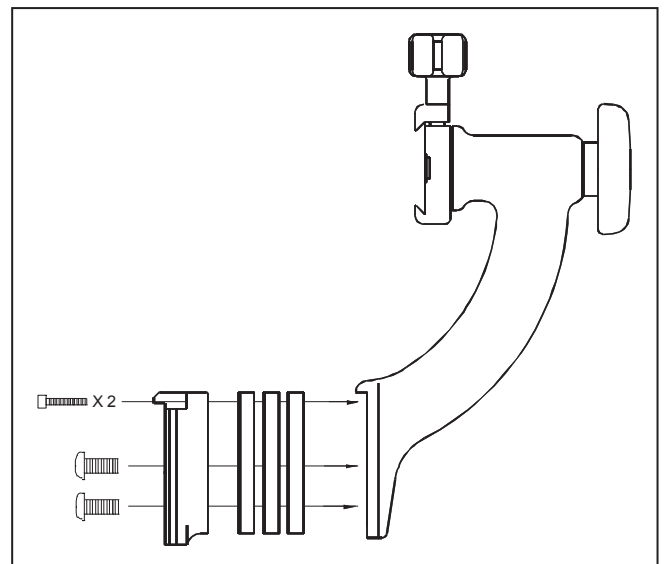
Wimberley, Inc.

Phone: 1-540-665-2744

974 Baker Lane
Winchester, VA
22603 USA

Toll Free: 1-888-665-2746 (USA & Canada)

www.tripodhead.com info@tripodhead.com



Thank you for your interest in Wimberley products.
If you have any questions or comments please feel free to contact us (our contact information is located above).