

About the M-9

The **M-9 Module** is a combination vertical upright and Arca-Swiss style quick-release attachment that is useful for several flash applications. It is part of the Wimberley Modular Flash Bracket System™. The M-9 Module is most commonly used in conjunction with the M-3 Tilt Arm to form the F-9 Wimberley Head Version II Flash Bracket (Fig. 1). If you plan to use the M-9 in this configuration, see Figures 1 & 2 below. If you have the old style F-4 Wimberley Head Flash Bracket, remove the bottom M-5 module then attach the Tilt Arm (M-3 module) to the M-9 as shown to make the Wimberley Head Version II Flash Bracket.

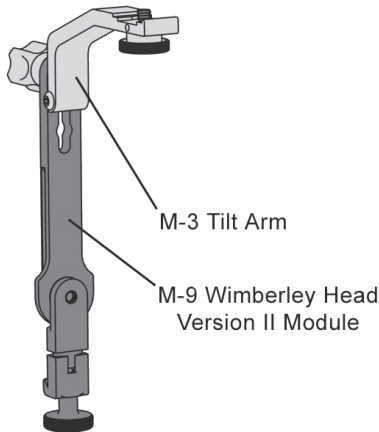


Figure 1 F-9 Wimberley Head Version II Flash Bracket (M-3 + M-9)

The F-9 Flash Bracket attaches directly to the Swing Arm of the Wimberley Head Version II. Since it attaches to the Head instead of the lens, it stays on the Head when you switch lenses, which can be extremely helpful in the field. On the Sidemount Wimberley, the F-9 attaches to the lens plate. Visit our website for detailed F-9 flash bracket instructions.

Dimensions (Overall L x W x H): 7.5 x 1.27 x .3 in

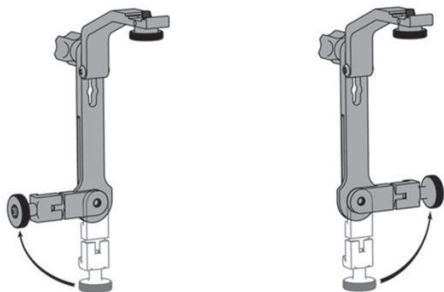
Weight: 3.1 oz

Materials: Anodized 6061 Aluminum, stainless steel fasteners

Instructions

Mounting the Bracket to Your Wimberley Head:

1. **To attach the bracket**, swing the bracket's pivoting arm so that it is perpendicular to the upright portion of the bracket (see illustration below).
2. **Then, slide the bracket** onto the Arca-Swiss style dovetail on the arm of the Wimberley Head and tighten the knurled knob (Fig. 2).



The bracket can be mounted on either side of the arm (as shown in Fig. 2). Choose the configuration that feels best to you and allows you to comfortably access the focusing ring on your lens.

Wimberley™

M-9

**Wimberley Head Version II
Flash Bracket Module™**
(Also for the *Sidemount Wimberley Head™*)



Made in USA



Package Contents:

- **M-9 Module** - Wimberley Head Version II Upright and Quick-release (Qty 1)

Wimberley, Inc.

974 Baker Lane
Winchester, VA
22603 USA

Phone: 1-540-665-2744

Toll Free: 1-888-665-2746 (USA & Canada)

www.tripodhead.com

info@tripodhead.com

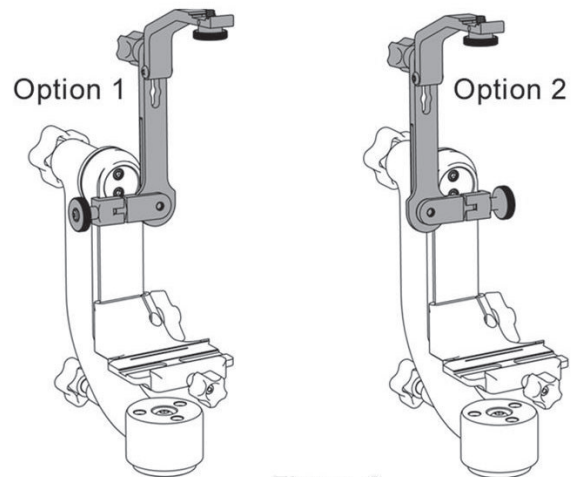


Figure 2

Instructions continued on back >>

Sidemount Configuration:

The F-9 Bracket can also be used on the side-mount gimbal heads such as the **Wimberley Sidemount Head** and the **Sidekick**. Swivel the M-9's quick-release arm on the bottom of the bracket to the straight position, then attach the bracket to the dovetail on your Arca-Swiss style lens plate as shown in Fig. 3.

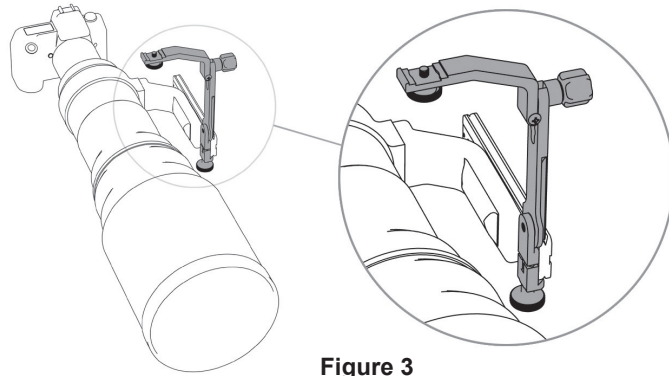
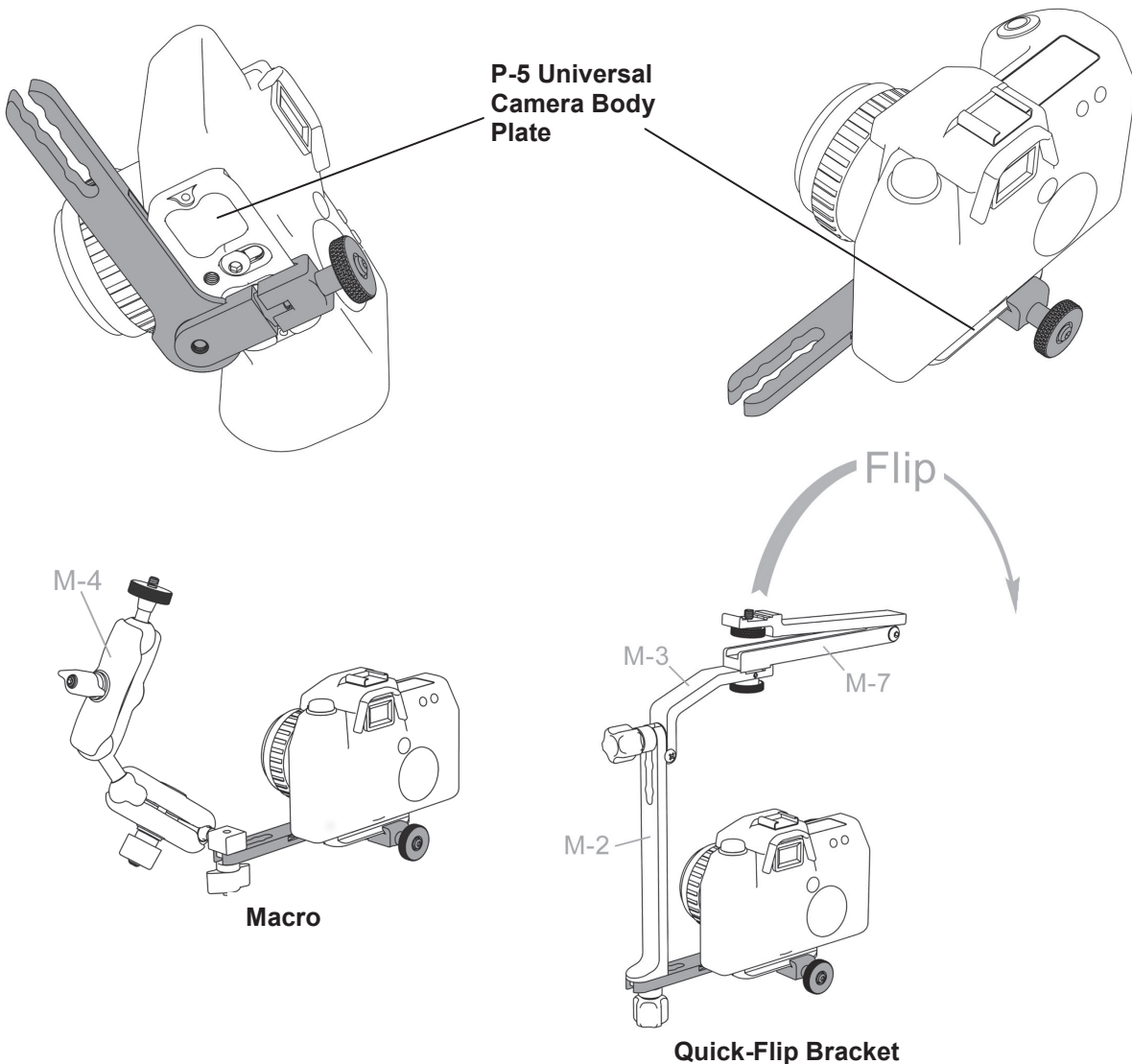


Figure 3

Attaching Module M-9 to Your Camera Body:

You can attach the M-9 to an Arca-Swiss style camera body plate as shown in the figures below. This allows you to attach module M-4 to form a macro bracket, or attach modules M-2, M-3, & M-7 to form a quick-flip bracket for wedding & portrait photography. If you use an L-bracket on your camera body that is Arca-Swiss compatible, you can attach the M-9 to the side of the camera for additional positioning flexibility.



Thank you for your interest in Wimberley products. If you have any questions or comments please feel free to contact us (our contact information is located in the black box on the first page).