

About the AP-11

The **AP-11 Dovetail Adapter** attaches to older style Kirk and Really Right Stuff lens plates and adds a second dovetail to these single dovetail plates. This enables attachment of an arca-swiss quick-release such as Wimberley Modular Flash Bracket System

This adapter can also be used to attach quick-release flash brackets made by Kirk, Really Right Stuff, Jobu and other manufacturers that use the arca-swiss configuration.

Instructions

Connecting the AP-11 to a Plate:

Step 1: Attach the AP-11 plate to the lens plate where you would normally attach a flash bracket. Use the enclosed hex key and fasteners - one fastener for Kirk plates, two fasteners for Really Right Stuff plates (Fig 1).

Step 2: Attach the plate so that the end with the lip faces the middle of the lens plate (Fig 2).

After installation, if there is not enough clearance between the adapter and the lens barrel to allow attachment of the flash bracket, you may need to buy a lower profile double dovetail Wimberley lens plate.

If this is the case, you can return the AP-11 for a full refund. Call or email us to request a Return Authorization number.

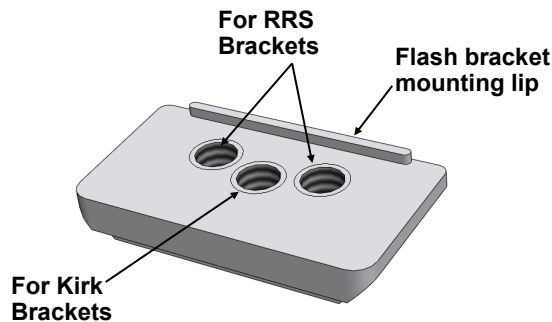


Figure 1

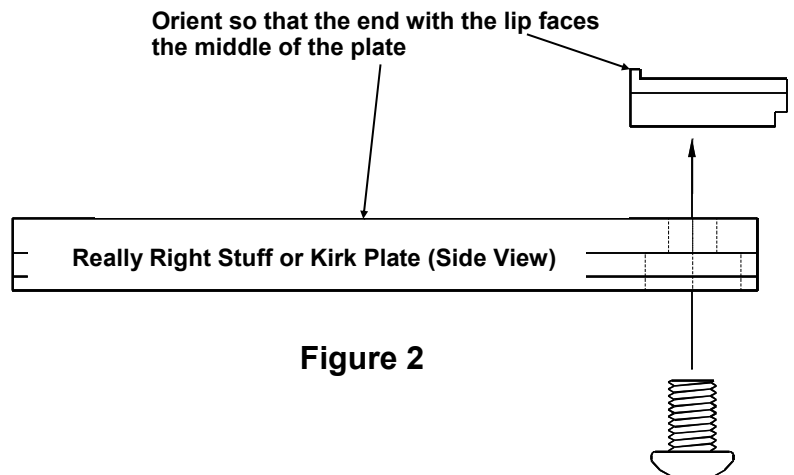
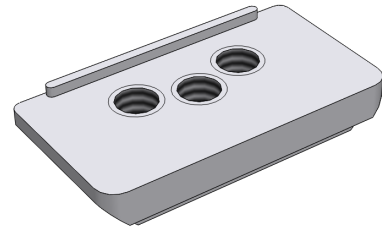


Figure 2

Wimberley

AP-11 Dovetail Adapter Plate




Weight: 0.7 oz

Dimensions (Overall L x W x H): 1.5 x 0.81 x 0.24 in

Materials: Anodized 6061 Aluminum, stainless steel

Package Contents:

- AP-11 Flash Cord Adapter (Qty 1)
- 1/4"-20 x 3/8" Mounting screws (Qty 2)
- 5/32" Hex key (Qty 1)

Made in USA 

Wimberley, Inc.

Phone: 1-434-529-8385

1750 Broadway St
Charlottesville, VA
22902 USA

Toll Free: 1-888-665-2746 (USA & Canada)

www.tripodhead.com

info@tripodhead.com

10 Year Warranty – See www.tripodhead.com/warranty.cfm for complete details

Thank you for your interest in Wimberley products. If you have any questions or comments please feel free to contact us.